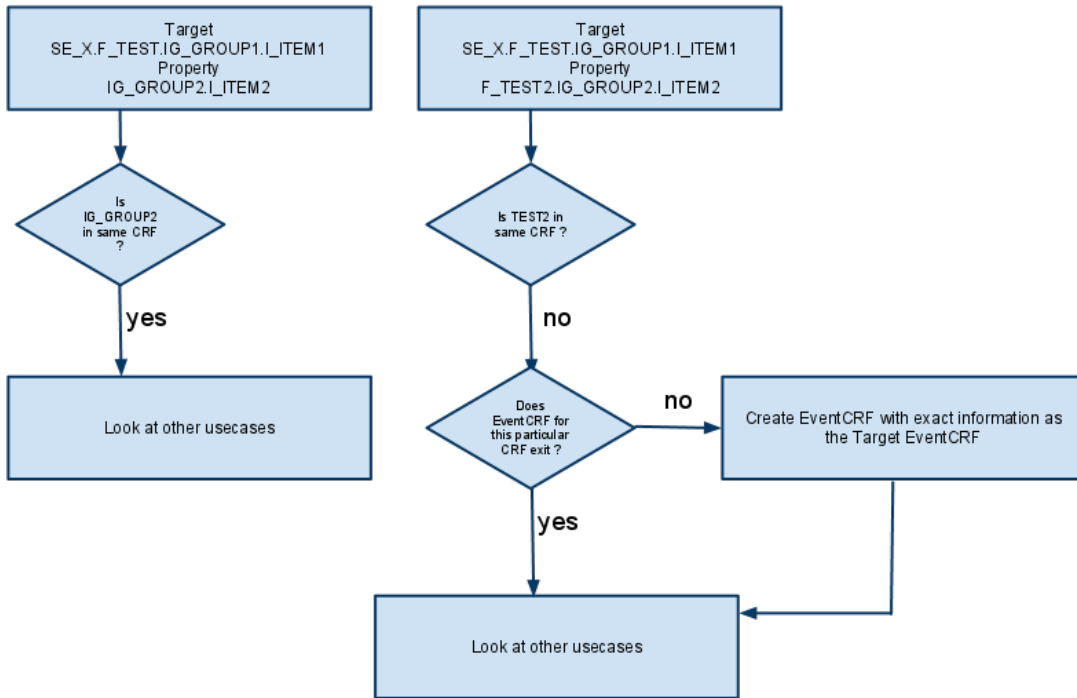




## 6.8.2 InsertAction Models

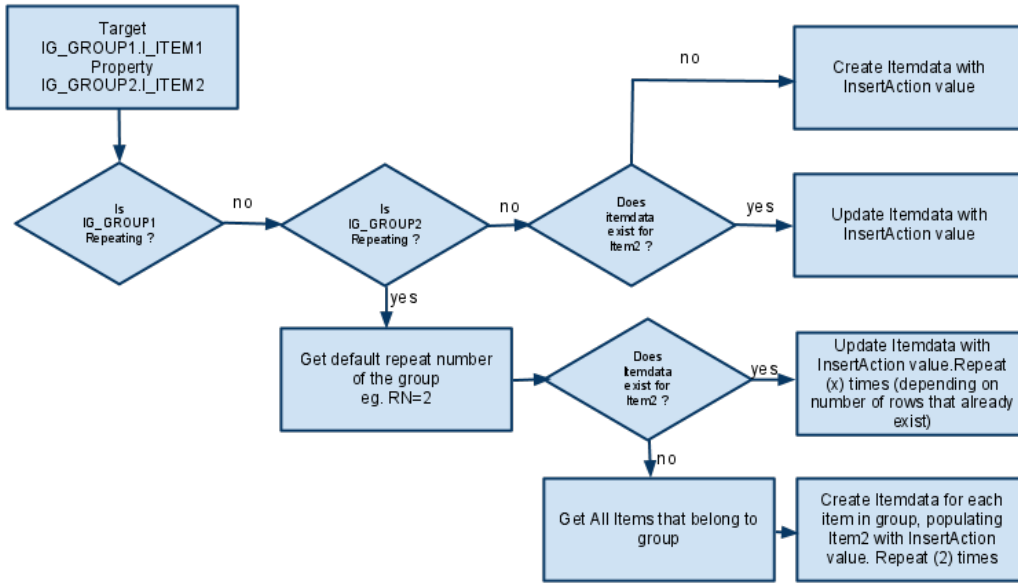
InsertAction - A1

IG\_GROUP1 : Non Repeating Group  
IG\_GROUP2 : Group  
I\_ITEM1 : Item1  
I\_ITEM2 : Item2  
RN : Repeat number  
RM : Repeat max



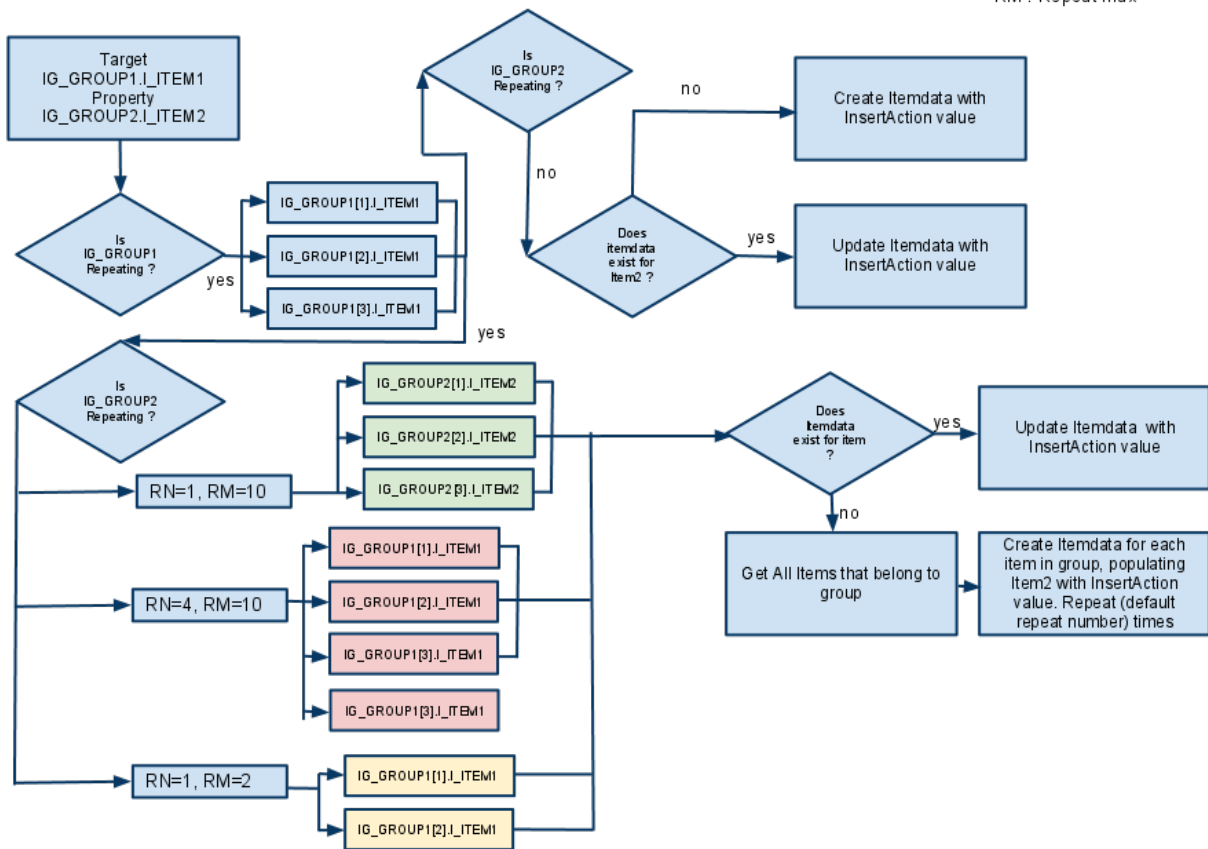
# InsertAction - A2

IG\_GROUP1 : Non Repeating Group  
IG\_GROUP2 : Group  
I\_ITEM1 : Item1  
I\_ITEM2 : Item2  
RN : Repeat number  
RM : Repeat max



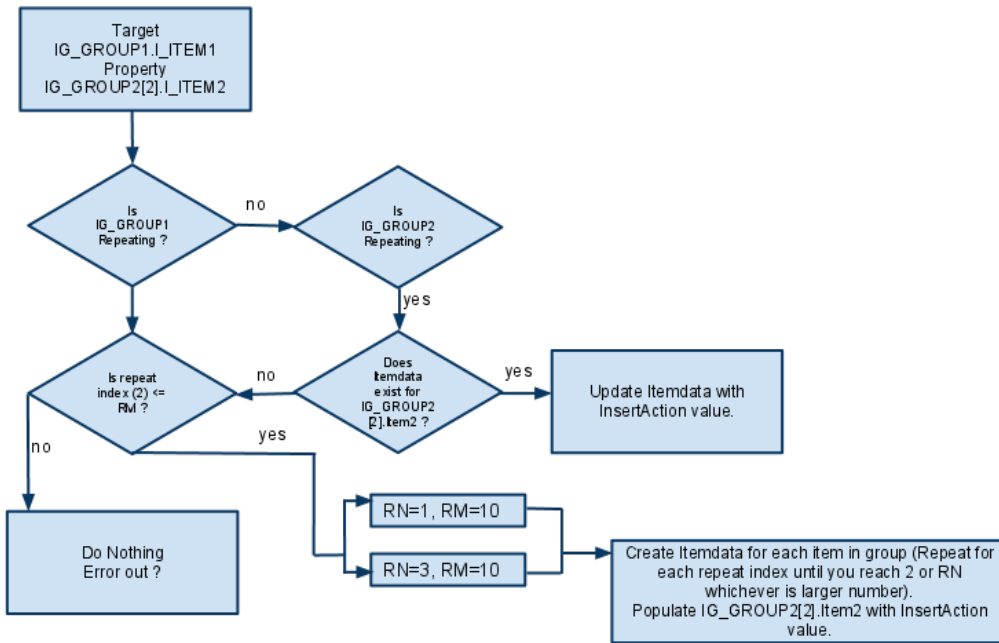
# InsertAction - B

IG\_GROUP1 : Repeating Group  
 IG\_GROUP2 : Group  
 I\_ITEM1 : Item1  
 I\_ITEM2 : Item2  
 RN : Repeat number  
 RM : Repeat max



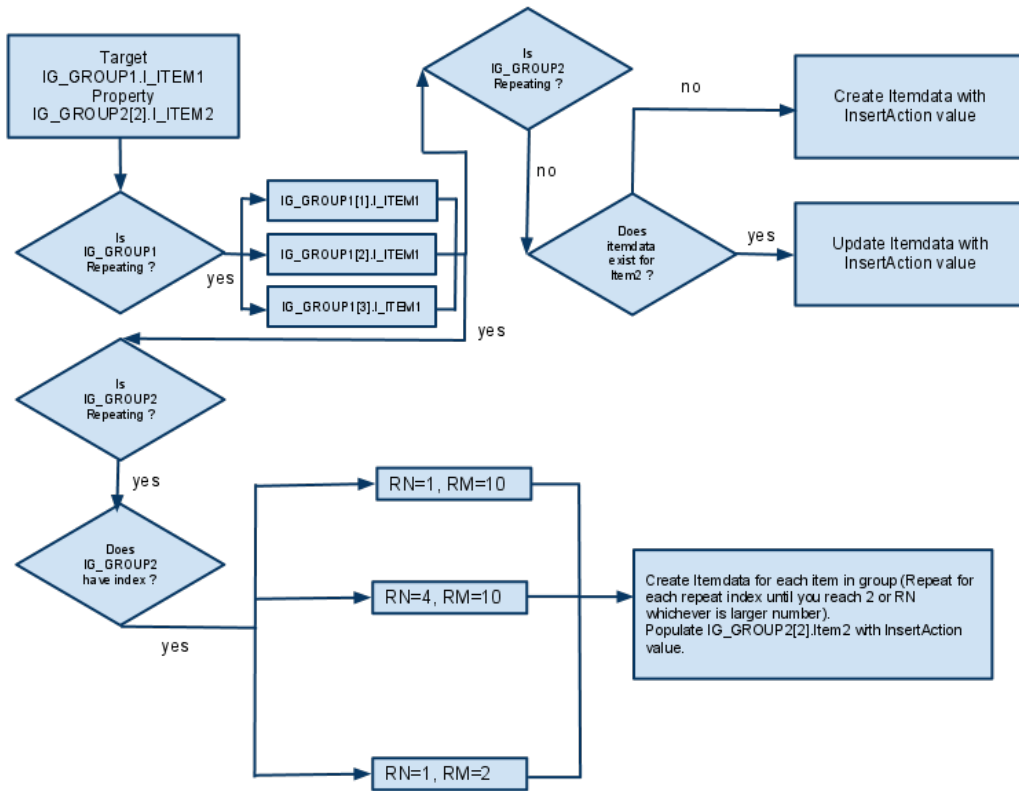
# InsertAction - C

IG\_GROUP1 : Non Repeating Group  
IG\_GROUP2 : Repeating Group  
I\_ITEM1 : Item1  
I\_ITEM2 : Item2  
RN : Repeat Number  
RM : Repeat Max



InserAction - D

IG\_GROUP1 : Repeating Group  
 IG\_GROUP2 : Group  
 I\_ITEM1 : Item1  
 I\_ITEM2 : Item2  
 RN : Repeat number  
 RM : Repeat max



This page is not approved for publication.