






## 4.5.2 Export Rules

On the Manage Rules on a study level page, you also have an option of downloading/exporting rules in CSV, Excel (for data export) and XML format (for rule file). All of the download/ export icons are located on the Manage Rules in <<Study Name>> header in between the drop down menu of how many subjects to be displayed and the Show More/ Hide link. Refer to the screenshot below.

**Manage Rules for Default Study** ⓘ





15



Show More | Test Rules

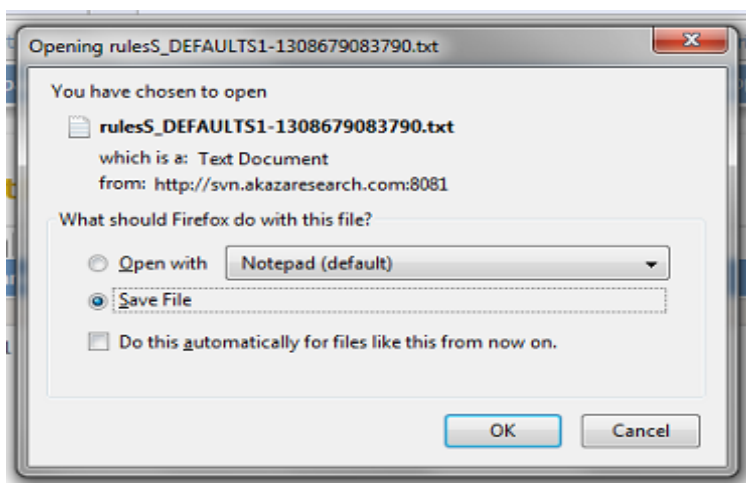
CRF	Item Name	Rule Name	Rule OID	Expression	Execute On
	31jantlorgan	08FEB1	08FEB1	I_001AL_31JANTLORGAN eq 31	true false

### Download icons for rules

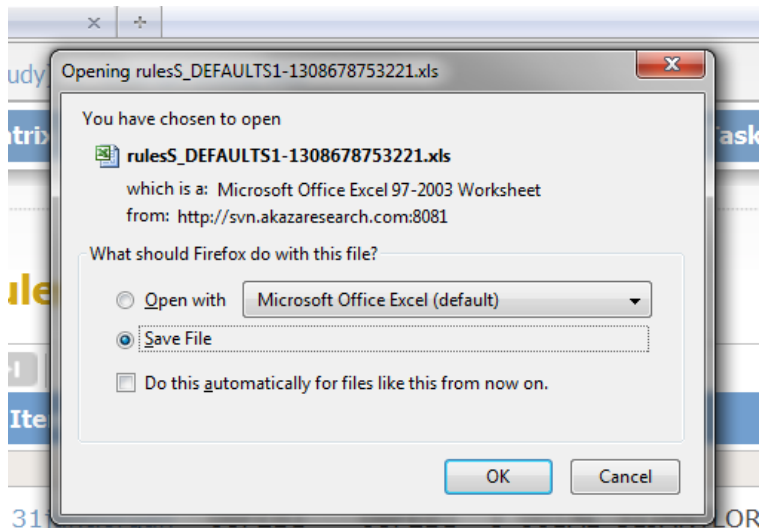
Left (red box): Exporting Rules in CSV

Middle (blue box): Exporting Rules in Excel format

Right (green box): Downloading the Rules file (in XML)

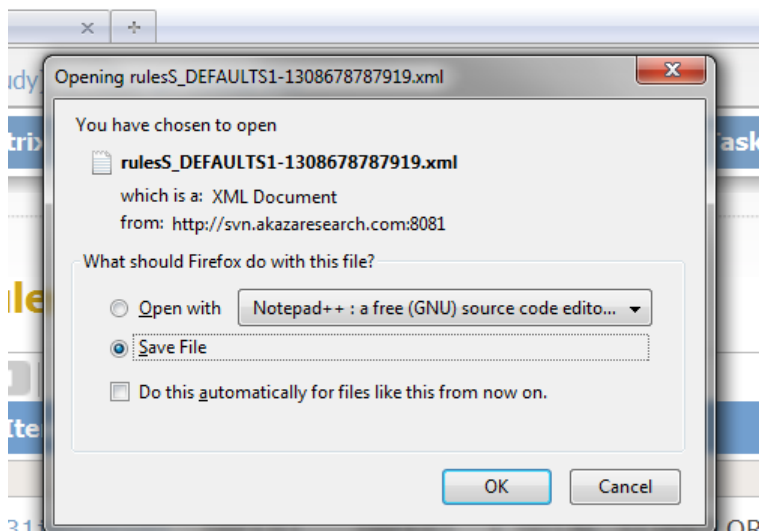


**Download Rule in CSV format. Note that the rule gets saved as a txt file but it could be opened with Excel.**



eq 31

**Download Rule in XLS format.**



en 31

**Download Rule in XML Format.**

This page is not approved for publication.